

**SPIŠSKÁ BOROVICA**  
**THE 30-TH THEME TOURNEY C 6.9.2018**

is announced for any kind of problems in 2 moves with antagonistic stipulation (#2, =2, S#2, R=2, etc...). Twins, multiple solutions, promoted pieces and also all kinds of fairy pieces and/or conditions are allowed.

The following **theme** is required:

In one variation, **the black king** plays to **a square neighbouring with a certain black piece**.

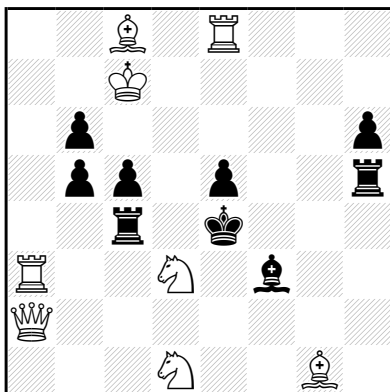
In the other variation, the same **black piece** plays to **a neighbouring square of the black king**.

These two thematic defences by king and another piece may be played either to the same square, or to two different squares. In the **diagram position**, the black king and the thematic black piece **must not stand on neighbouring squares**.

Multiple phases and changed mates are welcome, but not mandatory.

**EXAMPLE**

Milan Velimirović  
 Die Schwalbe 1996



1.Rf8? [2.Bb7#]  
**1...Kd5** 2.Sc3#  
**1...Rd4** 2.S3f2#  
 1...Rc3!

1.Qd2! [2.S3f2#]  
**1...Kd5** 2.Bb7#  
**1...Rd4** 2.Sc3#

#2 (8+9) C+

(In the example, thematic moves are shown in bold letters.)

Important: Only computer-tested problems (C+) will be accepted.

You may also send me the entry by e-mail to [peter.gvozdjak@gmail.com](mailto:peter.gvozdjak@gmail.com).

In such case it should be received latest by 31st August.

At the congress please hand your problems to the judge until **Thursday, 8.00 P.M.**

Judge: P. Gvozdjak.

(The tourney is open worldwide, however the prizes for congress participants only.)