

ANNOUNCEMENT of JOZEF TARABA 2nd MEMORIAL TOURNEY

Jozef Taraba-70 MT C 26.11.2017

Memorial tournament to commemorate the Slovak chess composer *Jozef Taraba* (26.11.1947 - 01.27.2000) on the occasion of the upcoming 70th birthday.

Direct twomovers.

Theme: *Taraba's line combinations.*

Judge: Karol Mlynka.

Director: Ján Golha, Lúky 1231/89, 952 01 Vráble, Slovakia; e-mail: goja@goja.sk

Deadline: November 26th, 2017.

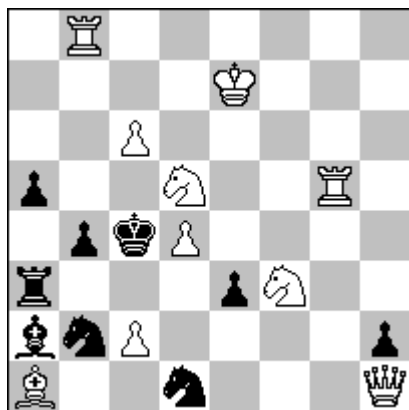
- ***Taraba's line combinations:*** *The tries are refuted because a white unit has given up its ambush position required for a compensatory line opening.*

Examples from Udo Degener's Albrecht collection:

<http://www.schach-udo.de/search2.php?search=Taraba&spalten=Thema1&submit=Search+source+code&start=6>

10157. Jozef Taraba

2nd HM Die Schwalbe - 168. TT(3) 1982



(2. ehr. Erwähnung - 3.Abt. Die Schwalbe - 168. TT (JT Ahues) XII/ 1982)

1. Qe1? (2.Sb6#A) Sa4! a; 1.Rg4? (2.Se5# B) Sd3! b;
1. c7! (2.c8Q/R#) Sa4 a, Sd3 b 2.Se5# B (2.Sb6?A), 2.Sb6# A
(2.Se5? B).

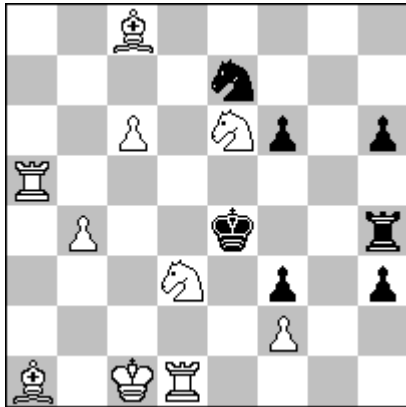
- Taraba's line combination
- Dual avoidance
- Hannelius theme

#2

(10+9)

3157. **Helmut Zajic**

2nd HM Dt. Schachblätter/Schach-Report 1986



(2. ehr. Erwähnung Dt. Schachblätter/Schach-Report VII/1986)

1.Sef4? ~ 2.Re1#, 1...Sf5 **a** 2.B*f5# **A**, 1...R*f4 **c** 2.Sdc5# **B**,
1...Sd5!,
1.Kd2? Sf5! **a**, 1.Ba6? Sd5! **b**,
1.Kc2! ~ 2.Re1#, 1...Sf5 **a** 2.Sdc5 # **B**, 1...Sd5 **b** 2.Sec5# **C**.

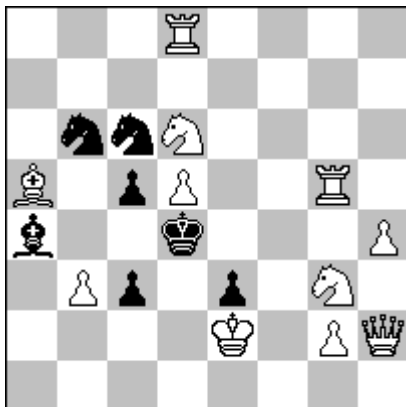
- Taraba's line combination
- E-theme (block form)
- Self-blocks
- Transferred mate: Z-22-23

#2

(10+7)

5840. **Cornelis Groeneveld**

2nd HM Schach 1986



(2. ehrende Erwähnung Schach IX/1986)

1.Qh3? ~ 2.Qg4#, 1...S*d5! **a**,
1.Rf8? ~ 2.Rf4#, 1...Se5! **b**,
1.h5! ~ 2.Qh4#, 1...S*d5 **a** 2.Sgf5# **A**, 1...Se5 **b** 2.Sdf5# **B**;
(1...Bb5+ 2.S*b5#, 1...c4 2.B*b6#).

- Taraba's line combination
- E-theme (block form)
- Self-blocks

#2

(11+7)

➤ More examples can be found on the website: www.schach-udo.de

Tarabas Linienkombination: Die Verführungen scheitern daran, dass eine weiße Figur ihre für eine kompensatorische Linienöffnung erforderliche Hinterstellungsposition aufgegeben hat.