

SPIŠSKÁ BOROVICA
THE 28-TH THEME TOURNEY C 4.8.2016

is announced for any kind of problems in 2 moves with antagonistic stipulation (#2, =2, S#2, R=2, etc...). Twins, multiple solutions, promoted pieces and also all kinds of fairy pieces and/or conditions are allowed.

The following **theme** is required:

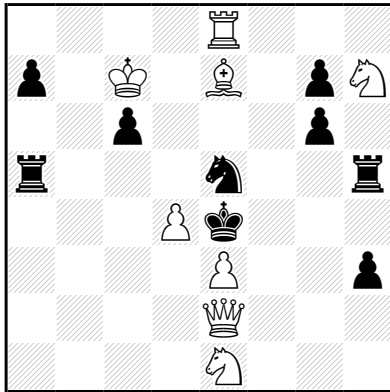
The **1st W move** (try or key) and the **1st B move** (defence or refutation) are played onto **neighbouring squares**.

Multiple phases and changed mates are welcome, but not mandatory.

EXAMPLE

Arieh Grinblat

Springaren 2014



1.Bc5? [2.Qf3#]

1...Kd5 2.e4#

1...Kf5 2.R×e5#

1...Rf5!

1.Bg5! [2.Qf3#]

1...Kd5 2.R×e5#

1...Kf5 2.e4#

#2

(8+9) C+

(In the example, thematic variations are shown in bold letters.)

Important: Only computer-tested problems (C+) will be accepted.

You may also send me the entry by e-mail to peter.gvozdjak@gmail.com.

In such case it should be received latest by 28th July.

At the congress please hand your problems to the judge until **Thursday, 8.00 P.M.**

Judge: P. Gvozdjak.

(The tourney is open worldwide, however the prizes for congress participants only.)