

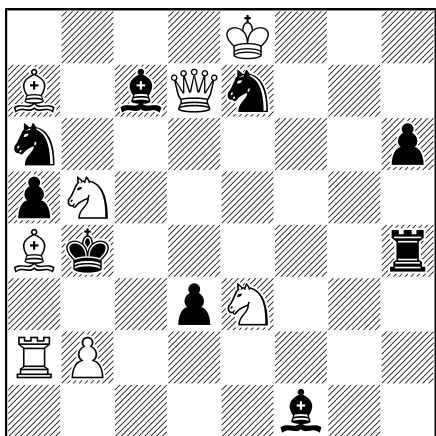
Stála riešiteľská súťaž

308. kolo

Dátum zverejnenia kola: 16.4.2022

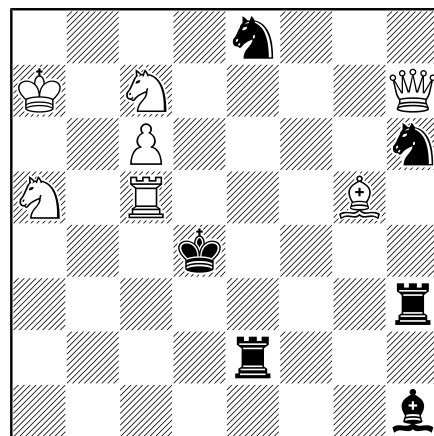
Riešenie bude zverejnené 4.5.2022

308 A



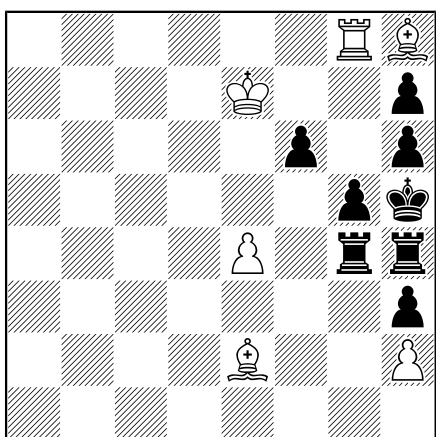
#2 (8+9)

308 B



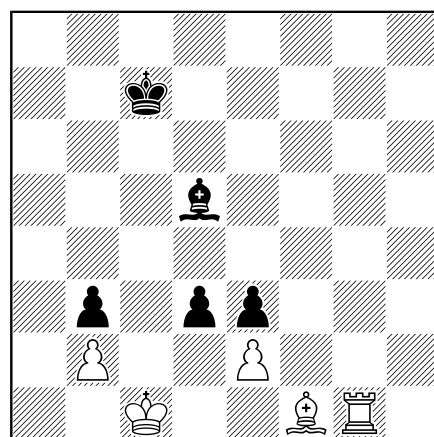
#3 (7+6)

308 C



#5 (6+8)

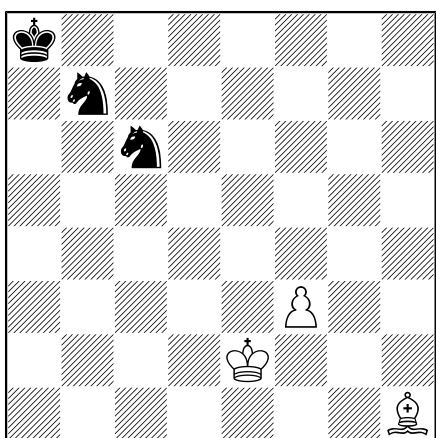
308 D



= (5+5)

Začína
čierny /
Black to play
BlackToPlay

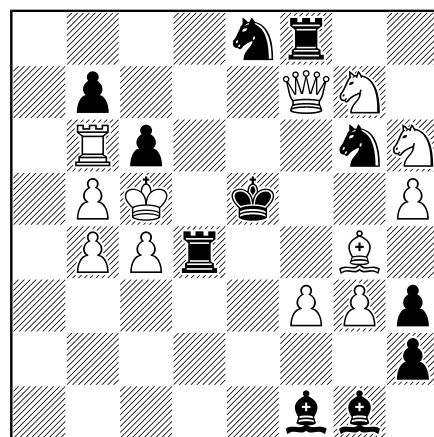
308 E



H#5 (3+3)

b) move e2
g4

308 F



S#2 (12+11)