

# Solutions / Riešenia InSitu 32. kolo / round

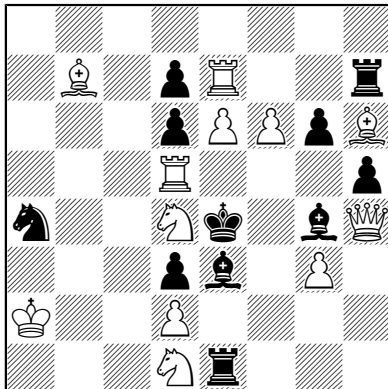
Začiatok riešenia: 17.12.2022 10:00

Zverejnenie riešenia: 17.12.2022 12:15

**Ph. Robert**

5. cena

mem. Tolosa 2016

**32 A**

#2

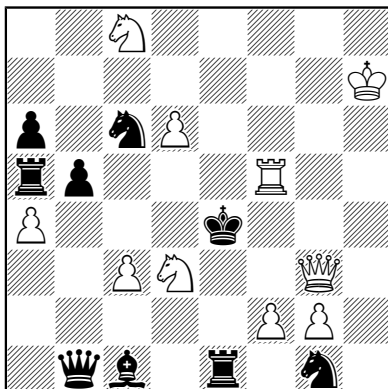
(12+11)

1. ♔f4 (5)

**K. Nielsen**

1. cena

BCF 1933

**32 B**

#3

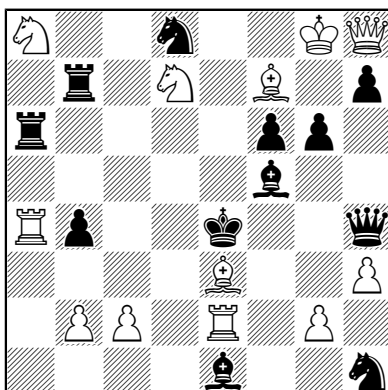
(10+9)

1. ♖d5 (2. ♔g6)

1... ♔d3, ♗g5, ♘e3, ♙d5, ba 2. ♔d3, ♗g5, f3,  
 ♘b6, ♔g4  
 (varianty 1 - 2 - 3 - 4 - 5 - 6) (body 1 - 1,5 - 2,5 -  
 3,5 - 4 - 5)

**A. Pankratiev**

Schach 1987

**32 C**

#6

(12+12)

1. ♘b6 (2. ♔d5)

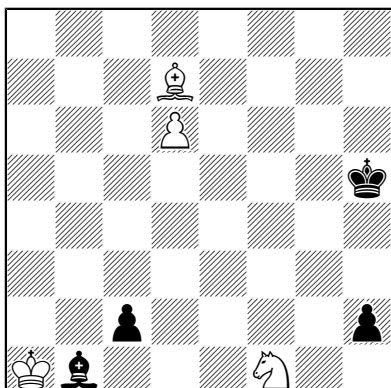
1... ♖ab6 2. ♗d2 ♙d4 3. ♖b4 ♖b4 4. ♗e3 ♙e4  
 5. ♗g5 (2,5)  
 1... ♖bb6 2. ♗g5 ♙d4 3. ♗f6 ♖f6 4. ♗e3 ♙e4  
 5. ♗d2 (2,5)

# Solutions / Riešenia InSitu 32. kolo / round

**M. Liburkin**

3. č. u.

Šachmaty v SSSR 1949



1. ♖g3 (0,5) ♔h4 2. ♚b2 c1♚ 3. ♚c1 ♙e4  
4. ♖h1 (2) ♙h1 5. ♙h3 ♙c6 6. ♙g2 (3) ♙g2  
7. d7 h1♚ 8. ♚d2 (5)

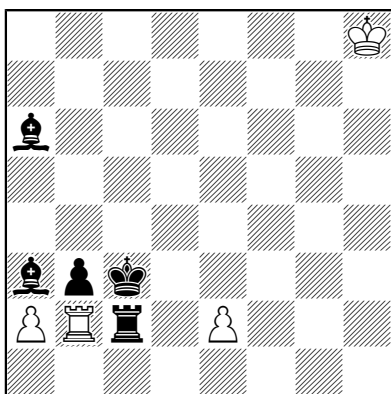
**32 D**

= (4+4)

**M. Bílý**

4. cena

The Problemist 1986



a) 1. ♙c4 ♚b1 2. b2 ♚d1 3. ♙b3 ab 4. ♙b4  
♚d3#  
b) 1. ♙b4 a3 2. ♚c4 ab 3. ♚c3 ♚d2 4. ♙b5  
♚d4#

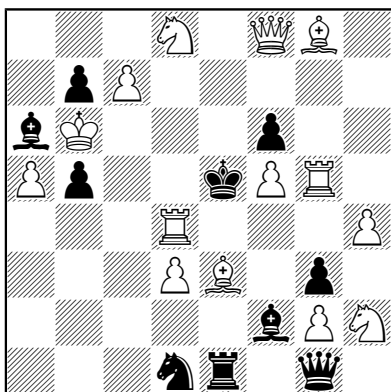
(riešenia 1 - 2) (body 2,5 - 5)

**32 E**

**H#4** b) Pe2→e3 (4+5)

**M. Keller**

Feenschach 1982



1. ♚f4 (2. ♚e8 ♚d6 3. ♙c5)  
1... ♖e3 2. ♖f3 ♚f4 3. ♚b4  
1... ♚e3 2. ♖g4 ♚f4 3. ♖e6  
1... ♙e3 2. ♚c5 ♚f4 3. ♚d4  
1... fg 2. ♚g7 ♚d6 3. ♙c5  
(varianty 1 - 2 - 3 - 4 - 5) (body 1 - 2 - 3 - 4 - 5)

**32 F**

**S#3** (14+10)