

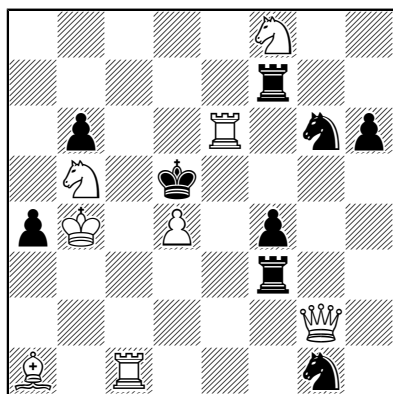
Solutions / Riešenia InSitu 25. kolo / round

Začiatok riešenia: 21.5.2022 10:00

Zverejnenie riešenia: 21.5.2022 12:15

Ch. Handloser
Harmonie 2013

25 A



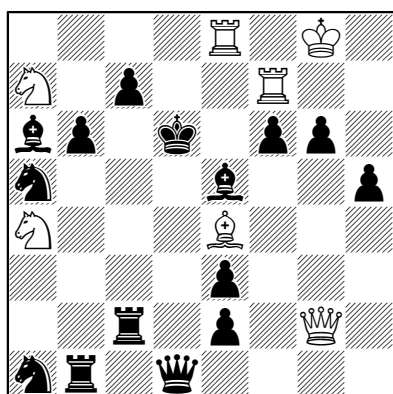
#2

(8+9)

1. ♖c4 (5)

J. Marker
1. cena
Schach 1980

25 B



#3

(7+15)

1. ♔f8 (2. ♖d8)

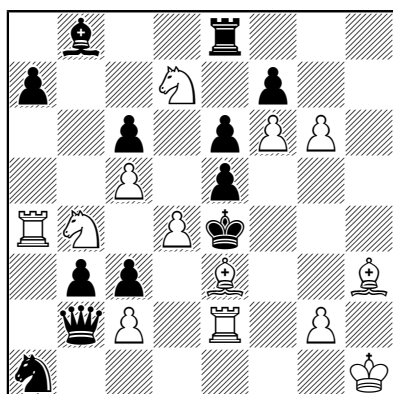
1... ♘c6 ♙b2 ♙c3 ♙d4 f5

2. ♙c6 ♙b7 ♙c6 ♙d5 ♚g6

(varianty 1 - 2 - 3 - 4 - 5 - 6) (body 1 - 1,5 - 2,5 - 3,5 - 4 - 5)

O. Jefrosinin
Šachmatija 2011

25 C



#4

(13+12)

1. ♙g4 (2. ♙f3 ♔f5 3.g4)

1... ♚c1/♚b1 2. ♙c1 ♔d4 3. ♘a2 1... ♚c2

2. ♙d2 ♔d4 3. ♘c2

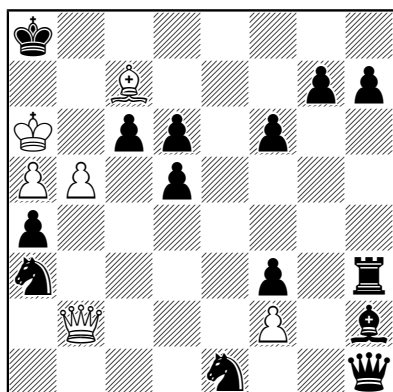
1... ♖h8 2. ♙h6 ♔d4 3. ♘c6

(varianty 1 - 2 - 3 - 4) (body 1 - 2,5 - 4 - 5)

Solutions / Riešenia InSitu 25. kolo / round

D. Przepiórka SchwSchZtg. 1915

25 D



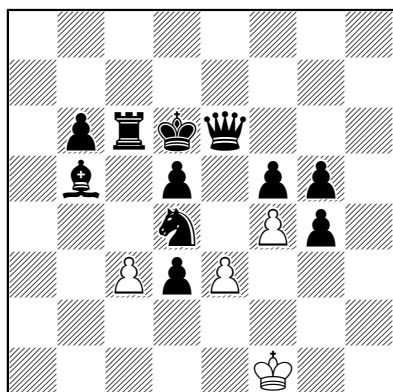
#7

(6+14)

1. ♔c3 c5 2. ♔e3 ♙e5 3. ♔d2 ♙d4
 4. ♔a2 (1,5) ♞c4 5. ♔c4 ~ 6.b6 (1)
 4... ♖h5 5. ♔e2 - ♔h3 6.b6 ♔e8 (1+0,5)
 4...c4 5.b6 ♙b6 6.ab (1)

F. Abdurahmanović pochv. zm. Harmonie Aktiv 2013

25 E



H#4

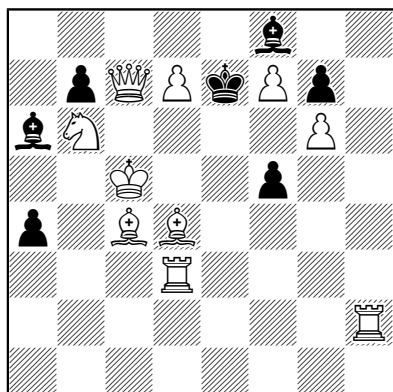
2.1.1.1....

(4+11)

1. ♖c3 ♙e1 2. ♖c6 ♙d2 3. ♙c5 ♙c3 4. ♔d6 ed
 (2,5)
 1. ♔e3 fg 2. ♔e6 ♙f2 3. ♙e5 ♙e3 4. ♖d6 cd
 (2,5)

G. Heathcote 1.cena Norwich Mercury 1910

25 F



S#4

(10+7)

1. ♖b3 (2. ♙d5 ♙c4/ ♙b5 3. ♖e2 ♙e2
 4. ♔d8) (1,5)
 1... ♙c4 2. ♖e2 ♙e2 3.d8 ♙ ♙e6 4. ♔d6 (1)
 2... ♙e6 3. ♖b5 ~ 4. ♔d8 (1)
 1... ♙b5 2.d8 ♙ ♙d7 3. ♙c6 bc 4. ♔d8 (1,5)