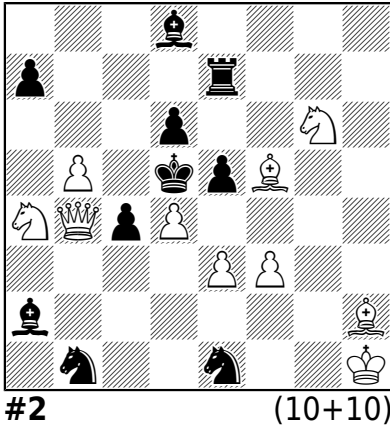


Z. Janevski
Chess Leopoldis 2009

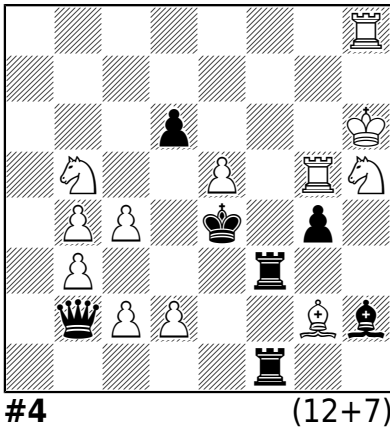


11 A

#2 (10+10)

1.Db2 (5)

T. Amirov
1. cena
Probleemblad 1976

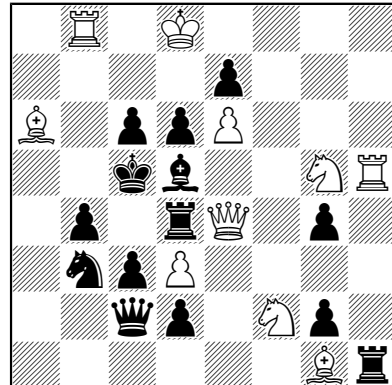


11 C

#4 (12+7)

1.Ve8 (2.Jf6 Kf4 3.Vg4) 1..De5 2.Jc3 Kd4
3.Je2 1...Se5 2.Jg3 Kf4 3.Je2 1...de 2.Jd6 Kd4
3.Jf5 1...Dc2 2.ed Se5 3.Vge5 (varianty 1 - 2
- 3 - 4 - 5) (body 1 - 2 - 3 - 4 - 5)

S. Chačaturov
2. cena
Schach Aktiv 2012

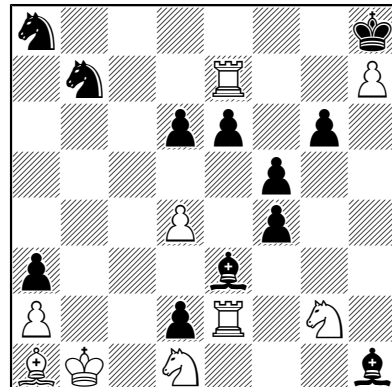


11 B

#3 (10+14)

1.Kd7 (2.Dd5) (1) 1...Vg1 Vh5 Vh4 Vc4
(1+1+1+1) 2.De3 Df5 Dd4 De3

J. Crusats
2. č. u.
BCPS 2012

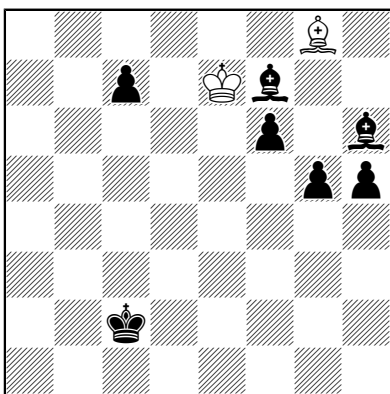


11 D

#7 (9+12)

1.Vd2 (2.Jh4) Sd2 2.d5 e5 3.Se5 de 4.Jh4
Se4 5.Ka1 Sc3 6.Jc3 (5)

Larin-Bacharev
1. p. z.
Ural Probl. 2006

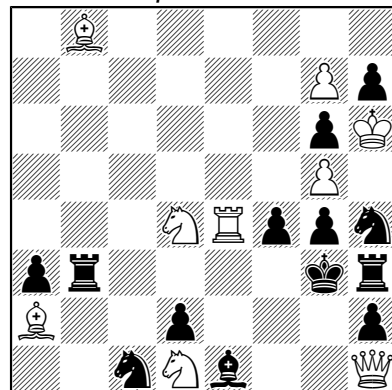


11 E

H#6 b) Add black pf7 (2+7)

a) 1.Sa2 Sb3 2.Kd3 Kf7 3.Ke4 Kg8 4.Kf5 Kh8
5.Kg6 Sg8 6.Sf7 Sh7 (2 5) b) 1.Kd3 Kd7

Z. Janevski
Chess Leopoldis 2009



11 F

S#3 (9+13)

1.Vf4 (2.Vf2 Vb8 3.Dg2) 1...Vd3 2.Vg4 Kg4
3.Se6 1...Vf3 2.Ve4 Vf4 3.Ve3 1...Vb8 2.Vf3
gf 3.Df3 (varianty 1 - 2 - 3 - 4) (body 1 - 2 - 5 -
4 - 5)

2.Ke4 Kc6 3.Kf5 Kd5 4.Kg6 Ke4 5.h4 Kf3
6.Kh5 Sf7 (2 5)